

LIPM  
MARZAGLIA

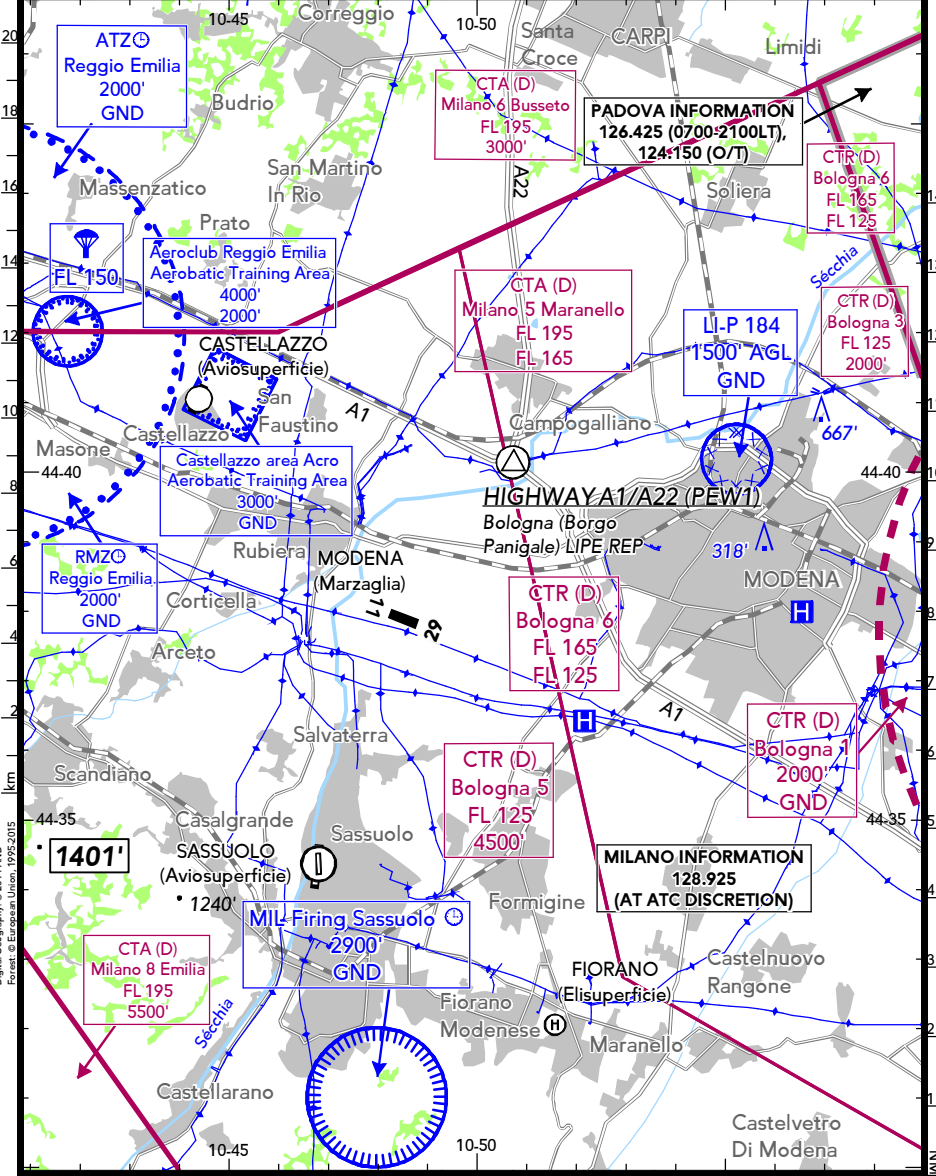
28 MAY 21 (19-1)

MODENA  
ITALY

BRIEFING STRIP™

LOCATION Elev 184' /56m N44 37.9 E010 48.5	FIS MILANO INFORMATION 128.925 <sup>(1)</sup>
AIRSPACE BOLOGNA APPROACH 120.100 <sup>(2)</sup> 118.150 <sup>(1) (2)</sup> 133.775 <sup>(2)</sup> BOLOGNA RADAR 120.100 <sup>(2)</sup> 118.150 <sup>(1) (2)</sup> 133.775 <sup>(2)</sup> MILANO RADAR 125.275 <sup>(3)</sup> 126.750 <sup>(3)</sup> 135.900 <sup>(3) (4)</sup>	RADIO MODENA RADIO 119.555

(1) at ATC discretion (2) Bologna CTR (3) Milano CTA (4) VFR ATC clearance via MILANO FIS



Digital Geography: © 2014 AND  
Forex: © European Union, 1992/2005

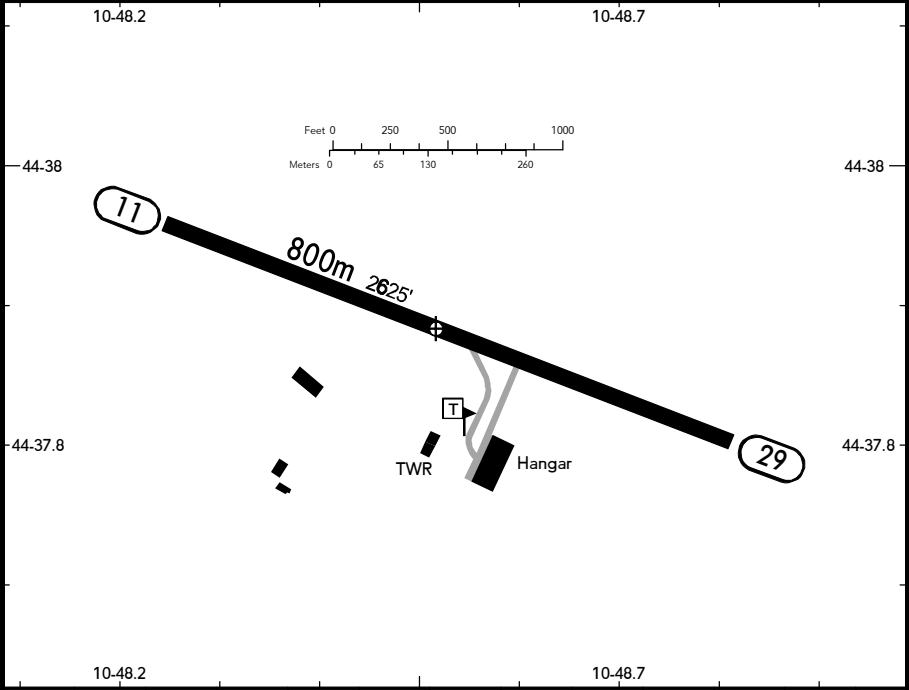
**LIPM**  
**MARZAGLIA**

28 MAY 21 **(19-2)**

**MODENA**  
**ITALY**

BRIEFING STRIP™

LOCATION Elev <b>184'</b> /56m N44 37.9 E010 48.5	RADIO MODENA RADIO <b>119.555</b>	ADMITTED AIRCRAFT  
---	--------------------------------------	--



RWY No	Dimension (m) - Surface	TORA (m)	LDA (m)	Strength	Lights
11 29	800 x 20 Paved	800	800	5t SIWL	---

NOTE: Refer to Bologna (LIPE) Area Information.

**Traffic circuit**

Traffic circuit N of RWY at 1000' AGL.