

LIDE

REGGIO EMILIA

REGGIO EMILIA

28 MAY 21

19-1

ITALY

BRIEFING STRIP™

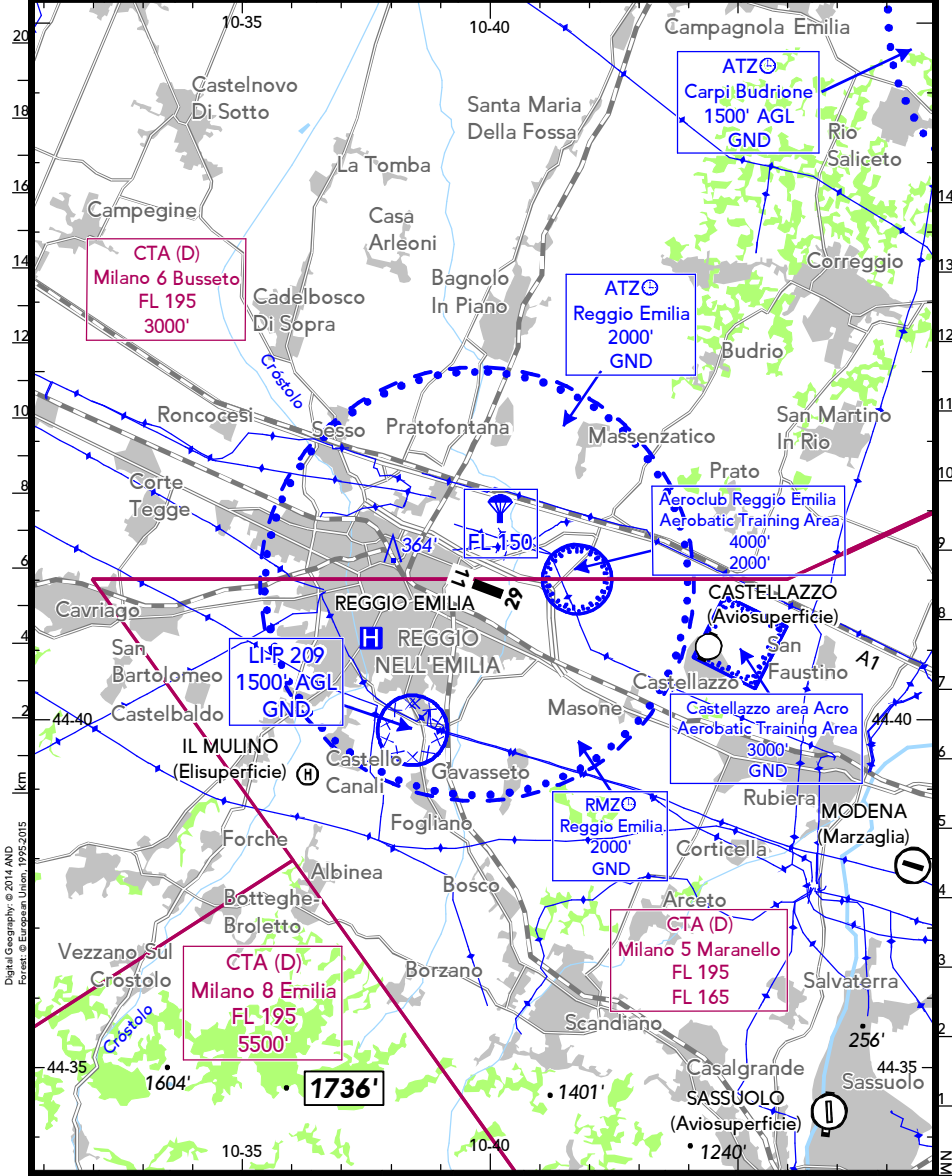
LOCATION
Elev 152' /46m
N44 41.9 E010 39.8

FIS
MILANO INFORMATION 128.925⁽¹⁾

AIRSPACE
MILANO RADAR 125.275⁽²⁾ 126.750⁽²⁾ 135.900^{(2) (3)}

AFIS
REGGIO EMILIA AERODROME INFO 127.150 (it, en)

⁽¹⁾ at ATC discretion ⁽²⁾ Milano CTA ⁽³⁾ VFR ATC clearance via MILANO FIS



Digital Geography © 2014 AND
Forestry © European Union, 1992-2015

VAR 19'E

NAD

LIDE

REGGIO EMILIA

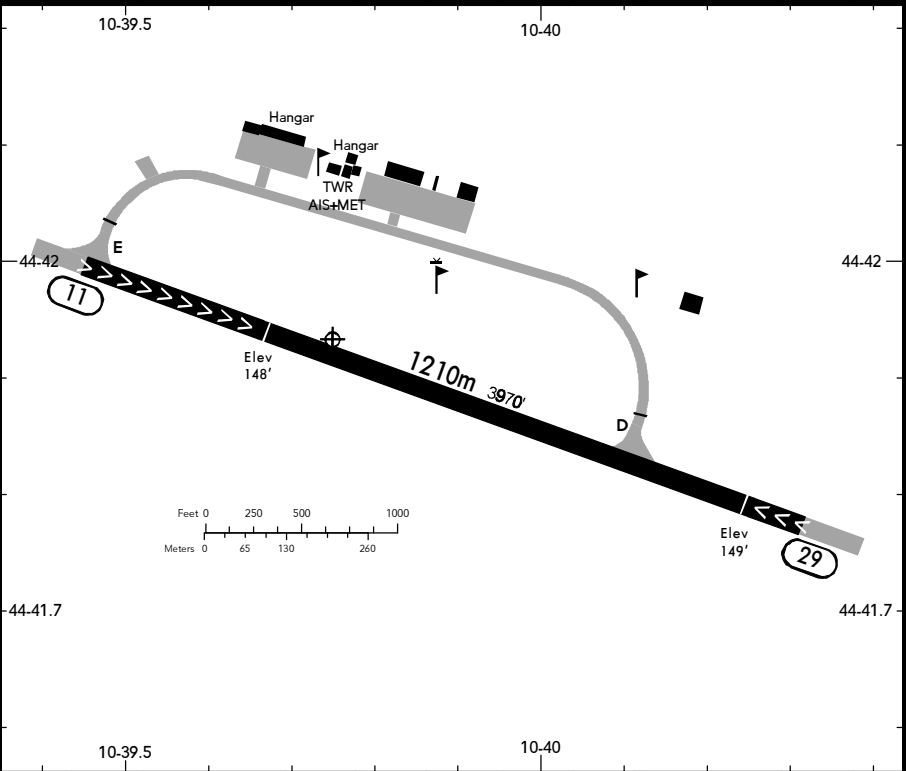
REGGIO EMILIA

28 MAY 21 (19-2)

ITALY

BRIEFING STRIP™

LOCATION Elev 152' /46m N44 41.9 E010 39.8	AFIS REGGIO EMILIA AERODROME INFO 127.150 (it, en)	ADMITTED AIRCRAFT
--	---	-----------------------



WDL					
RWY No	Dimension (m) - Surface	TORA (m)	LDA (m)	Strength	Lights
11 (109°)	1210 x 30 Asphalt	1210	915	7t SIWL	---
29 (289°)			1123		

Traffic circuit

Traffic circuit at 1000' AGL N of RWY: RWY 29 RH.
 Traffic circuit for GLDs: RWY 11/29 LH.

Miscellaneous

Due to heavy aerobatic activity, it is dangerous to overfly AD below 4500' AGL.

Intense parachuting activity during all the year, usually on weekend.